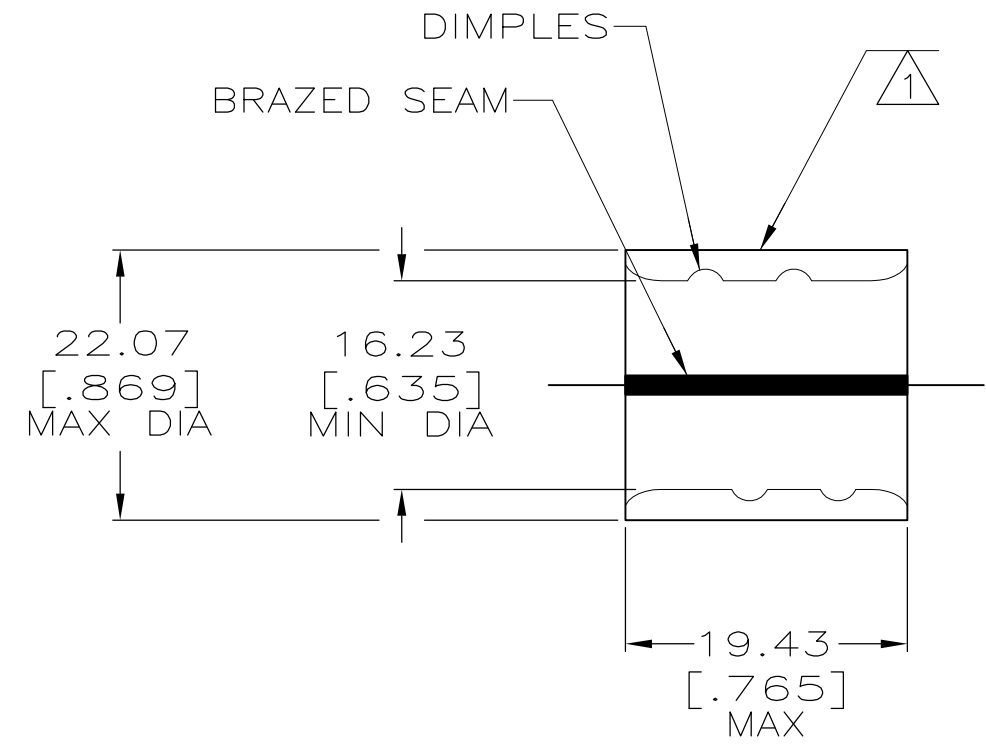


THIS DRAWING IS UNPUBLISHED. RELEASED FOR PUBLICATION
 © COPYRIGHT - BY TYCO ELECTRONICS CORPORATION. ALL RIGHTS RESERVED.

| LOC | DIST | REVISIONS | | | | | |
|-----|------|-----------|-----|-----------------------|---------|-----|------|
| G | 14 | P | LTR | DESCRIPTION | DATE | DWN | APVD |
| | | | F1 | REV PER ECR 08-010969 | 01MAY08 | JR | RL |

| | | |
|------------------------------|------------------------------|------------------------------|
| AMP WIRE RANGE | Listed FILE E13288 | LR7189 Certified |
| 4/0 AWG SOLID OR STRANDED | 4/0 AWG SOLID OR STRANDED | 4/0 AWG SOLID OR STRANDED |



- 1 STAMP AMP 4/0W* 125 LOCATE APPROX AS SHOWN
- 2 MATERIAL THK: 2.59 ±0.08 [.102 ±.003]
- 3 TIN PL 0.00254 [.000100] MIN THK PER ASTM B545.
- 4 CLEANED, UNPLATED
- 5 P/N 1-36948-1 IS NOT UL OR CSA LISTED.
- 6 STAMP FOR MANUFACTURING LOCATION OR CODE PERMISSIBLE.
- 7 PREPRODUCTION - FASR REQ
- 8 NOT UL OR CSA LISTED
- 9 0.00254 [.000100] MIN TIN-LEAD (60-40) PLATE PER SAE-AMS-P-81728
- 10 PRELIMINARY - NOT FOR PRODUCTION

| 9 | - | LOOSE PIECE | 8 10 | 36951-2 |
|--------|-----|----------------|----------|-----------|
| 4 | - | LOOSE PIECE | 5 7 | 1-36951-1 |
| 3 | - | LOOSE PIECE | | 36951 |
| FINISH | QTY | PACKAGING TYPE | PART NO. | |

| | | | | | | | | | |
|--|--|---|--|--|-------------------------------|---|--------------------|-----------------------|--------------------|
| AMP INCORPORATED CUSTOMER SERVICE SYSTEMS | | MAX RECOMMENDED OPERATING TEMPERATURE: 170°C | THIS DRAWING IS A CONTROLLED DOCUMENT. | | DWN DK SCHRUM 5/24/93 | Tyco Electronics Corporation Harrisburg, PA 17105-3608 | | | |
| FOR ADDITIONAL PRODUCT INFORMATION OR COPIES OF DRAWINGS AND TECHNICAL DOCUMENTS | PRODUCT INFORMATION CENTER 1-800-522-6752 | VOLTAGE RATING: N/A | DIMENSIONS: MM [INCHES] | TOLERANCES UNLESS OTHERWISE SPECIFIED: | CHK RD HEIM 1/27/94 | NAME JL MECKLEY 1/27/94 | | | |
| FOR APPLICATION TOOLING INFORMATION | TOOLING ASSISTANCE CENTER 1-800-722-1111 | CIRCULAR MIL AREA: 96.3-117.0mm² [190,000-231,100] SOLID OR STRANDED | | 0 PLC ± - 1 PLC ± - 2 PLC ± 0.20[.008] 3 PLC ± - 4 PLC ± - ANGLES ± - | APVD JL MECKLEY 1/27/94 | PRODUCT SPEC - APPLICATION SPEC - | | | |
| FOR ORDER ENTRY | 1-800-526-5142 | THIS DRAWING IS A CONTROLLED DOCUMENT FOR AMP INCORPORATED. IT IS SUBJECT TO CHANGE AND THE CONTROLLING ENGINEERING ORGANIZATION SHOULD BE CONTACTED FOR THE LATEST REVISION. | MATERIAL COPPER PER ASTM B-152 | FINISH SEE TABLE | WEIGHT - | SIZE A3 | CAGE CODE 00779 | DRAWING NO G-36951 | RESTRICTED TO - |
| CUSTOMER DRAWING | | | | | SCALE 2:1 | SHEET 1 OF 1 | REV F1 | | |